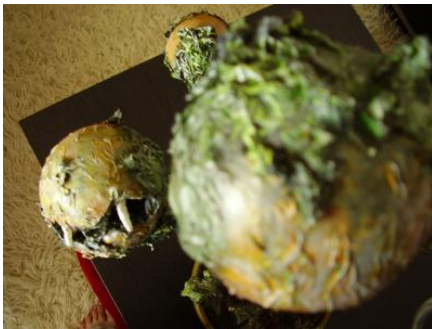




[My Ghoul Friday](http://www.ghoulfriday.com)

http://www.ghoulfriday.com/carnivorous_plant

Carnivorous Plant



How to make a nice little plant that just happens to have big fangs. Click on the titles to see a full description of each step.

You might wish to read the short article Paper Mache: Toilet Paper Tips before you start your project.

Step 1: Stem and Pot



I had an old terracotta pot and a small branch. I packed the branch in with styrofoam, but you could use anything to make it stay. All you big spenders should get that florist foam used for arrangements. ;) And while you're at it, pick up the floral wire they use too. It will work much better than the wire I had on hand.

Step 2: Create Blooms & Bulbs



I had styrofoam balls of 3 different sizes. I used the largest ones for the "bloomed" plant heads, and smaller ones for the buds. I cut mouths into the large styrofoam balls, put them on the end of wire, and then wrapped the wire around the branch.

Step 3: Add Tissue for Foliage



I wanted a lot of fine texture for the foliage, so I used toilet paper as my Mache mix. It's my LEAST favorite to use because it can completely disintegrate into a pulpy mush so easily with too much glue or too much fussing. So don't be discouraged if you try it this way. After a bit of trial and error, you get a feel for it. Make peaks with it, tear it, layer it...just be sure to give it plenty of drying time.

I began covering the wires, the back of the blooms and creating leaves.

Step 4: Create Leaves at the Base



I also created leafy shapes coming out from the bottom. As you can see, it isn't a perfect shape. You merely want to make it come to a point at the end, and try to create highs and lows in the body of the leaf, like a wave.

You could make the outline of the leaves with wire, and cover those with mache. You could also use fake leaves from craft stores. I was just experimenting and wanted to see the effect just using toilet paper mache would create. I also like to just use recycled products from around the house if possible to keep the project inexpensive.

This all took a long time to dry. Be patient. A day or two is needed.

Step 5: Add a Base of Green



All dry and ready to go. Began adding a base of green to the stem.

Step 6: Add Browns and Blacks



I gave a quick coat of browns and blacks to the showing styrofoam, and gave some color to the leaves. I'm going to cover most of the bottom with actual soil, but I want to make sure if anything peeks through, it's got color.

Step 7: Paint the Bulbs & Texturing



Here is a close-up of one of the "almost blooming" buds (medium sized styrofoam ball). As always, the key is layering colors, dark to light.

Step 8: Create Fangs



I cut fangs off some plastic teeth I got at the dollar store, painted them white and put wire in them which would later be inserted into the open mouths of bloomed plants.

Step 9: Add Teeth & More Layering of Paint



I used basic colors: Green, Yellow, & Brown. I made different shades of these colors by mixing them with each other or with white. Play around. Don't be afraid to experiment. Like my high school art teacher used to tell me "Don't stop adding paint just because you're afraid you might ruin it". Acrylics are very forgiving. If you screw up, just wait until it's dry and paint over it.

Step 10: Touch Ups



And voila!

Step 11: Add Soil



Excuse the flash burst (it makes it look much whiter than it is), but I wanted to make sure the picture captured the soil in the base. Using mixed mediums (soil and wood with paint and mache) makes it more believable, and helps suspend the disbelief of onlookers.



And You're Done