



[http://witchotastic.com/?page\\_id=869](http://witchotastic.com/?page_id=869)

## Hot Glue Skulls



My plan was to have my skulls look more like the skulls seen in the Capuchin Crypt stacked with no lower jaw bone, however you can use this same technique with a full skull with lower jaw bone.

There are a 101 ways to make your own skulls on the web...this is just my rendition of so many great how-to's to save me a few bucks this Haunt Season!



### Items needed:

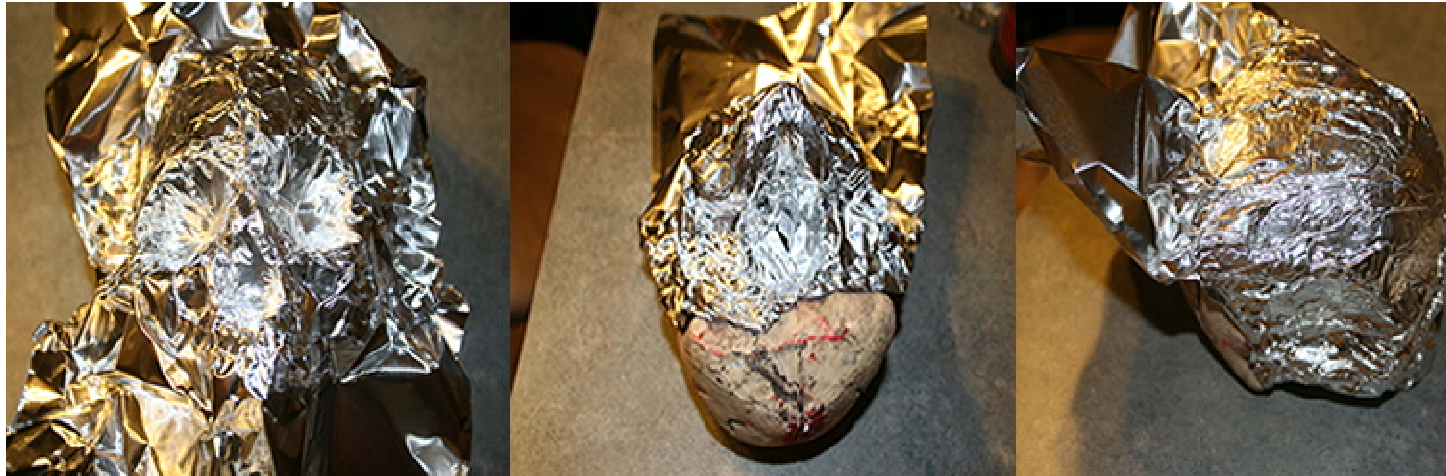
- Glue Gun
- Glue Sticks - I picked up a 5lb box for \$12.99 at my local craft store.
- Heavy Duty Aluminum Foil
- X-acto Knife
- and pure endurance

Obtained from  
Omarshantedtrail.com



I started off with a simple foam skull and covered it with Heavy Duty Aluminum Foil.

Start at the eyes pressing foil smooth in to eye sockets. I suggest moving to the nose next (this will ensure facial features are formed correctly and eliminate tearing of the foil when smoothing over remaining skull). Smooth foil over entire surface area of the skull tucking excess foil under skull.



Now with glue gun in hand, start applying glue, glue, and more glue. **IDIOT WARNING: THE GLUE IS HOT AND WILL BURN THE CRAP OUT OF YOU! SO BE CAREFUL AND USE COMMON SENSE!** As I added glue to the skull, I used the side of the gun tip to smooth/drag glue over surface. This really helps eliminate high/low ridges on surface (think frosting a cake and the tip is your spatula)



Once the entire skull is covered with glue, it's time to remove the glue form from your foam skull. Starting from the bottom untuck excess foil from beneath/inside the skull. Using your x-acto knife cut from the bottom up towards the center of the skull (seen in photos below).



After the glue form is cut to the center of the foam skull, you can easily pull the foam skull out leaving you with an identical skull shell. Lastly glue the slit in the skull shell back together. I went back over the seam and applied an additional layer of glue for added support.





### **Finished Skull for under a Buck!**

Just add paint of your choice.



If your plan is to mount these or want additional strength you can add Great Stuff Foam inside for structural support and an excellent base for mounting.

Obtained from  
[Omarshauntedtrail.com](http://Omarshauntedtrail.com)