

Construction of Rocking Chair Skeletons

Materials:

- 1/2 - 10 ft. (3 m) 3/4 inch (20 mm) diameter PVC pipes
- 1 - 3/4 inch (20 mm) diameter PVC T connectors
- 1 - 3/4 inch (20 mm) diameter PVC cross connectors
- 4 - 3/4 inch (20 mm) diameter PVC 90° elbow connectors
- 4 - 3/4 inch (20 mm) diameter PVC end caps
- 1 - Plastic skull (\$3 to \$5)
- 1 - Bag of cheap plastic leg and arm bones (\$2 to \$5)
- 1 - Old clothes
- 1 - Rocking chair
- 1 - Ground stake based exterior flood lamp fixture
- 1 - Red outdoor flood lamp

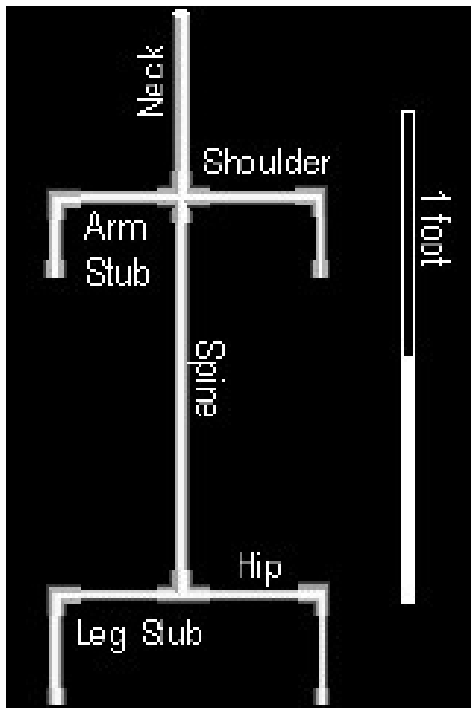


Tools

- Hack saw
- Drill and bits
- Wood file or sanding paper
- Tape measure

Obtained from
Omarshauntedtrail.com

Instructions



Cut the PVC pipe into the dimensions listed in Table 1. A single 10 ft (3 m) section of PVC pipe will make frames. File or sand the ends of the pipes to remove burrs. Drill 3/8 inch (1 cm) diameter holes in the centers of the end caps.

Connect the pipes and connectors as shown in Figure 1. Place the end caps on the ends of the arm and leg stubs. Assemble the leg bones and arm bones.

Insert the connectors of the arm bones and leg bones into the end caps. Cover the skeleton with clothing and place in the rocking chair. Adjust the joints so that the skeleton appears to be sitting in the chair. Place the skull on top of the neck PVC pipe.

Quantity	Body Part	Pipe Section (in.)	Pipe Section (cm.)
1	Spine	18"	46 cm
1	Neck	9"	23 cm
2	Shoulder	5"	6 cm
2	Arm Stub	2.5"	6 cm
2	Hip	5"	13 cm
2	Leg Stub	4"	10 cm

Obtained from
Omarshauntedtrail.com