



<http://hedstorm.net/HAUNT/instructions/roofghost/>

The Roof Ghost



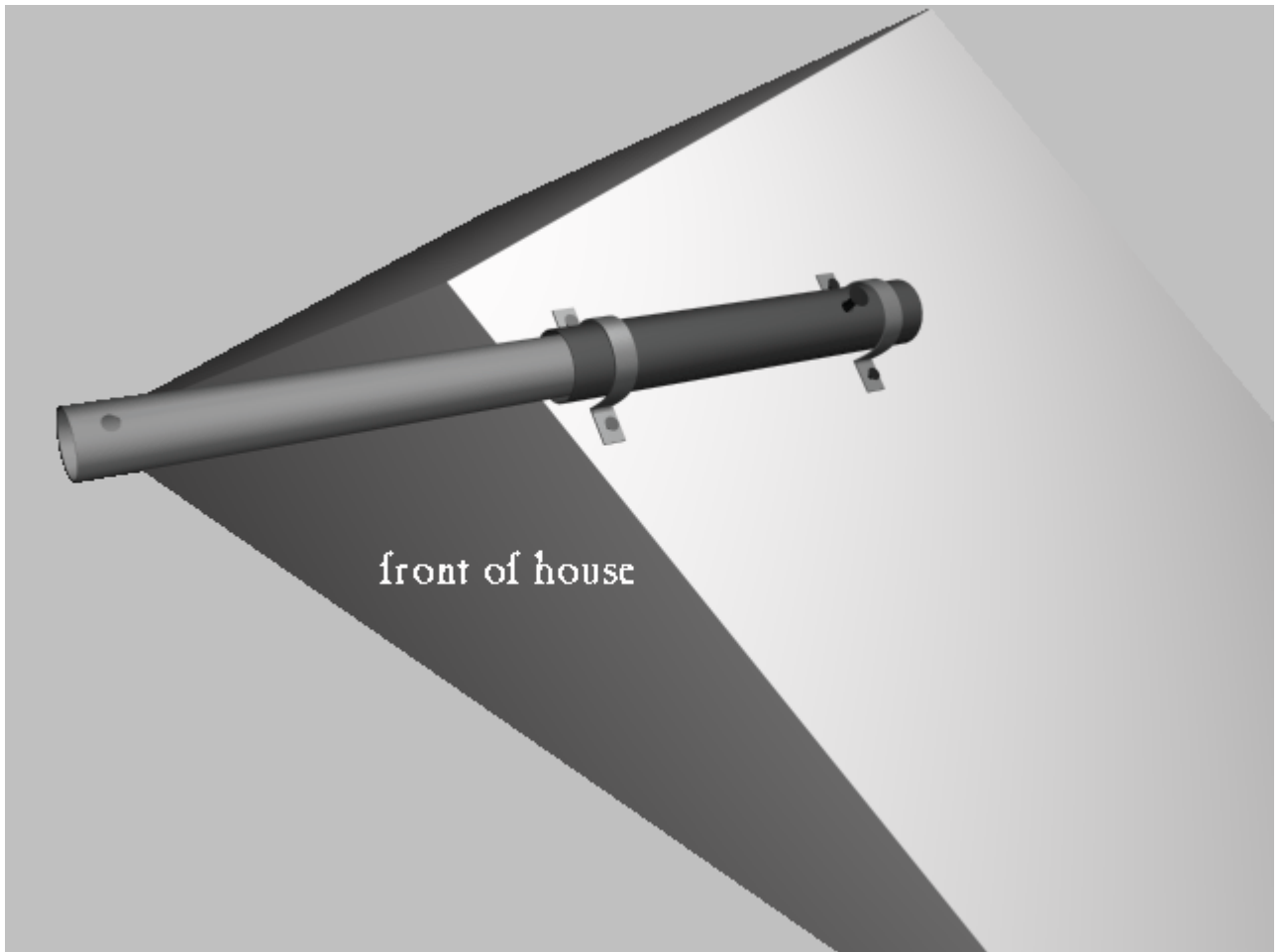
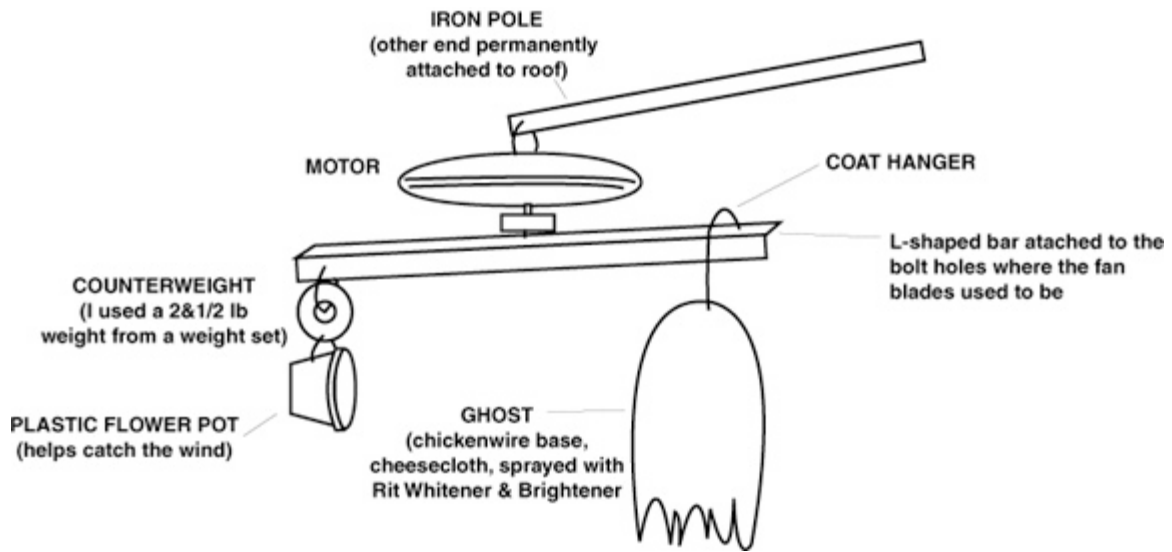
I apologize about the photos, these are a few years old. I'll try to find some clearer, more recent ones soon.

The attachment that holds the iron pole to the roof is permanently attached to my roof and the pole is heavily bolted in each year. The ghost was revamped in 1998 and is no longer that horrible yellow, due to my learning from the Halloween-I about "Rit Whitener & Brightener".

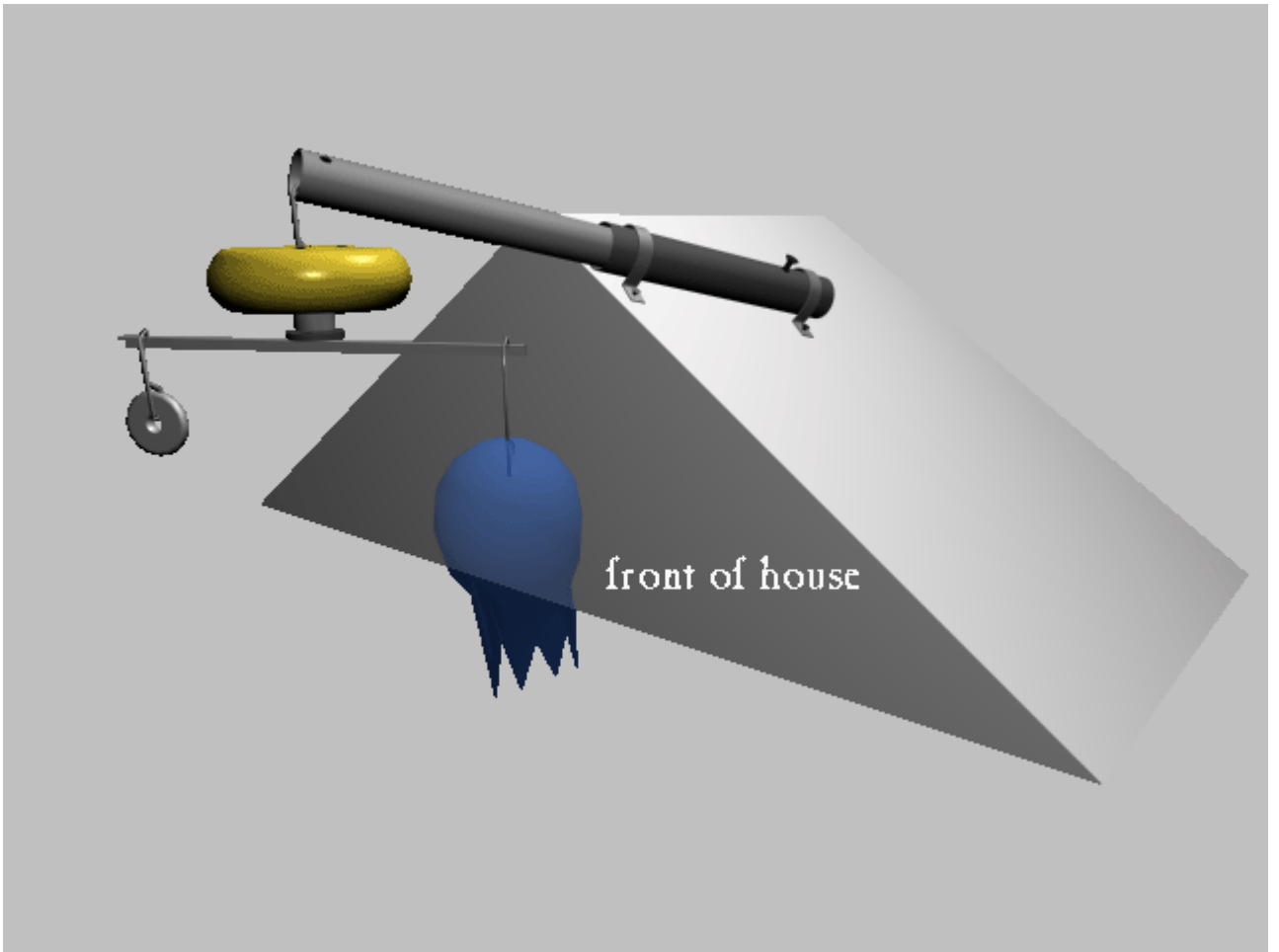


Lit from below with a blacklight, it now looks more like this:

Obtained from
Omarshauntedtrail.com



Obtained from
Omarshauntedtrail.com



Obtained from
Omarshauntedtrail.com