



<http://www.agonalhaunts.com/pr06.htm>

PVC Door Gate

This is a gate I decided to make to break up my rooms. This is a gate from the main entrance room into the Den. I wanted the door to be free swinging but I will probably decide to operate it with a door closer.

Supplies needed:

- 6 sections of 3/4" P.V.C. at least 8' in length.
- Black Spray Paint.
- Section of plywood 6"X6"
- 2 lengths of 1X3
- Two Fence Lag Bolts (found at local hardware)
- 3/4" Drill auger.

Start by measuring your outside length needed for door opening. Mine is arched so they are different sizes. Start length approx 2" from wall.

Cut your length of P.V.C. 4" shorter than your measurement so as to clear the top and bottom of door way. Then measure 6" in from of that one and cut your P.V.C. to length (remembering to cut 4" shorter) and continue this until you have all you lengths.

Now on your 1X3's, cut them so they are 2" shorter than your door width. Measure width 2" below the start of the arch and approx 12" from the floor. From the end of board draw a line every 3".

Now draw a line half way through the width on each end and draw a straight line from end to end. This will give a start point for your drilling. Drill all of your holes with Auger bit.

Now insert your PVC into both pieces of wood.

Obtained from
Omarshauntedtrail.com

From the bottom measure up 6" and place your 1st 1X3 Here. Make sure the bottoms of all the PVC are even.

From the shortest PVC length measure down 3" and place your second 1X3 here. Drill a small hole through each 1X3 into the PVC then screw in a 3/4" dry wall screw into each PVC at top and Bottom.

Draw a key hole onto your plywood and cut it out. You can use a recessed router bit and groove out the inside to give it more realistic appearance.

Drill small holes through plywood and PVC and mount Key Hole where it looks appropriate.

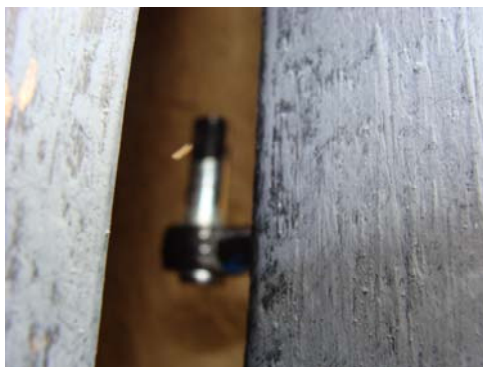
On your 2X4 drill 2 holes just a little smaller than your fence lags and then screw in lags.

On your 1X3 measure correct distance from wall to the edge of 1X3 allowing the lag to hold the 1X3 away from the wall (sorry no measurements here this has to be a custom fit.) drill holes in 1X3 the same size a lag upright and mount gate.

Spray paint the crap out of it and your done.



Here is the fence gate lag used as a hinge.



This is the hole drilled in the bottom cross member that the fence lag inserts into.



Obtained from
Omarshauntedtrail.com



This is the finished bottom notice that all the PVC are of equal lengths on the bottom.



This is the custom made lock, made from wood and liquid nailed and drywall screwed onto PVC.



Obtained from
Omarshauntedtrail.com



Here is the almost finished product, the only thing I will be adding is fennels on the tops made from styrofoam and made to a point.

Obtained from
Omarshauntedtrail.com