

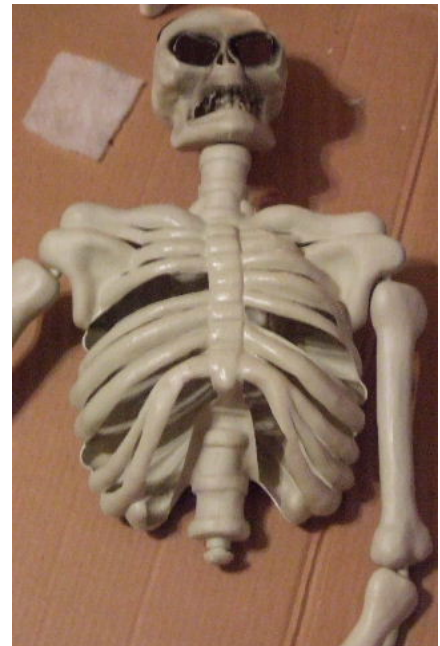
# Hallows Eve 88

[http://geocities.com/hallows\\_eve\\_88/Corpsing\\_Skeleton.htm](http://geocities.com/hallows_eve_88/Corpsing_Skeleton.htm)

## Corpsing a Skeleton



We removed the bottom part of the skeleton because he is going to be in a coffin (about 4' high). Then, using an Exacto knife, we removed parts of the rib cage, the eye sockets and the mouth.



Using Elmer's glue mixed in water (about 1:3), we then cut squares of quilt batting and split the two layers and placed the squares in the glue mixture. The consistency of the glue was like milk. When they were wet, we pulled on the edges a bit to widen the fibers and put them on the skeleton.



Once hardened overnight, we sprayed a light brown paint/mahogany stain/water mixture on the whole skeleton. To apply the stain, we used an old spray bottle. The mixture was watered down in order to go through the spray tube.



After seeing a few websites on "corpsing a skeleton," we decided to give it a try. We used a \$10 skeleton for the body, quilt batting, brown paint and mahogany stain to make this guy for our coffin.



The texture has the appearance of rotting flesh and was basically done with one layer of batting.

We did not use polyurethane since we used glue for the batting and then added the paint and stain but it could always be added if it were to be outside exposed to the weather for a long time.